

# Neue Mälzerei

## Historic charm

.. original brick walls, domed rooms steeped in history

## A wonder with space

.. 1 hall and 5 seminar rooms all on one floor, walls can be opened or closed for effective and flexible use of space

## Multifaceted

.. for conferences, workshops, product presentations and events

## Full service

.. audiovisual equipment, furnishings, catering, staff, branding

## Easy to get to

.. 2 km from Alexanderplatz

## Green

.. green energy supply, German Rail (DB) event ticket, certified by EMAS



# Neue Mälzerei

compact and versatile



## At a glance

- ✓ 800m<sup>2</sup>
- ✓ 150 people
- ✓ 1 hall und 5 seminar rooms

- ✓ Elysium, terrace
- ✓ ceiling height of up to 5m
- ✓ daylight

Räume	M <sup>2</sup>	L x W	Height	Row	Parl.	Banq.	U	Circle	Recpt.	Dayl.
Plenary hall	130	20,2 x 6,4	2,8	140	74	80	46	60	140	●
Domed hall n/s	95	10 x 9,5	5,0	79	44	50	26	40	75	●
Lobby	110	17 x 6,4	2,8						75	●
Lounge	60	10 x 6,4	2,8			32			50	●
Seminar I	47	7,4 x 6,4	2,8	45	24	30	18	26	45	●
Seminar II	51	8 x 6,4	2,8	54	24	30	20	26	25	●
Seminar III	30	4,6 x 6,4	2,8	23	15	20	16	22		●
Seminar I+II	98	15,4 x 6,4	2,8	107	57	70	38	45	60	●
Elysium	170	18 x 11,5	3,4	102	51	50	32	50	100	●
Terraca	72	6 x 12				48			60	●



## Arrival

- Underground: U5 bis Strausberger Platz, exit Lebuser Str., 3 min. walk
- Tram: M5, M6 and M8 to Platz der Vereinten Nationen, 3 min. walk
- Bus: 142 from Hauptbahnhof or Ostbahnhof to Friedrichsberger Straße, 2 min. walk

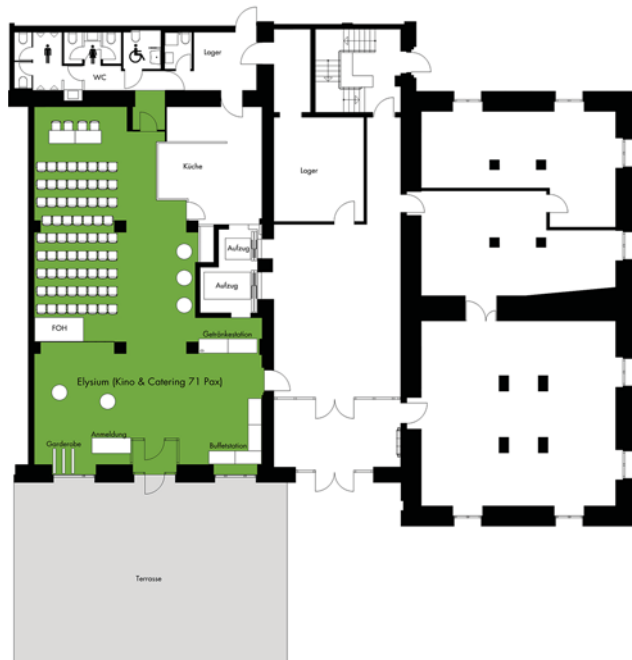


# Neue Mälzerei

800m<sup>2</sup> event space for up to 150 people



5<sup>th</sup> Floor



Ground floor

